

WATA



PENTA VALVE

Five hydropneumatic valves merged into a single valve

About Wata

DESIGN WITH CARE, this is also Wata's philosophy: innovative products, designed with care and built with the finest materials and the best components.

Each product is created keeping in mind its installation and after-sales service.

Penta valve

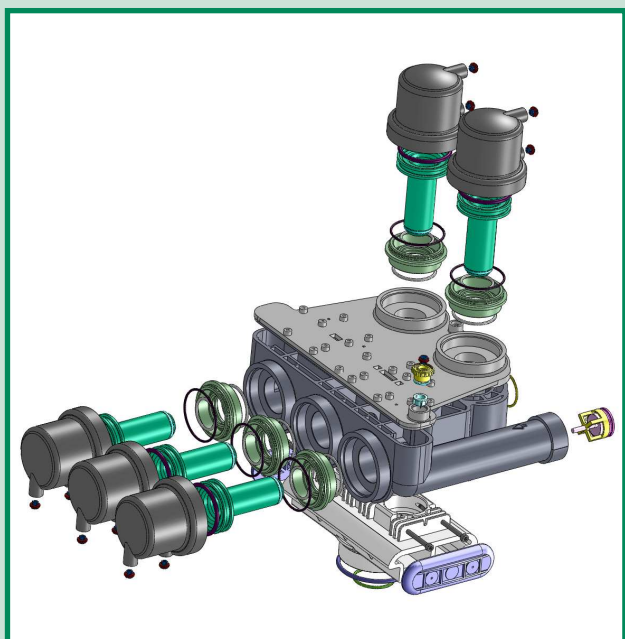
- Entire range of applications (upflow and downflow regeneration, filter).
- Top mounted or side mounted.
- The motorized pilots can work with air or water.
- Fully programmable cycle times.
- Cost effective.
- Available with controlled refill time and closure of brine line during service.





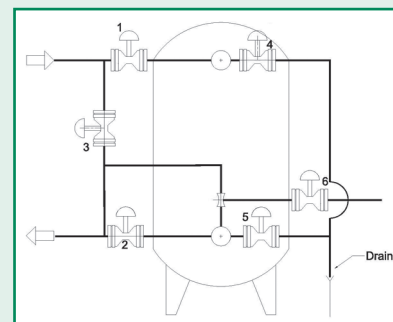
Specifications and performances

- Valve body: Noryl.
- Inlet/Outlet: 2" or 2 1/4".
- Service flow rate: 18,0 m³/h @ 1 bar drop.
- Side mounted with two single external single valves: 30,0 m³/h.
- Operating pressures: 1 - 8 bar.
- Water temperature: 1° - 45°C.
- Ambient temperature: 1° - 50°C.



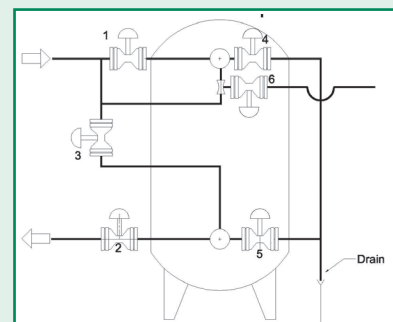
SOFTENER UPFLOW WITH BY-PASS 6 valves - 4 pilots

	VALVES					OPTION
CYCLE	1	2	3	4	5	6
SERVICE	0	0	C	C	C	C
BRINE/SLOW RINSE	C	C	0	0	C	0
FAST RINSE	0	C	0	C	0	0
PILOTS	1	2	3	-1	4	-2



SOFTENER DOWN FLOW WITHOUT BY-PASS 6 valves - 4 pilots

	VALVES					OPTION
CYCLE	1	2	3	4	5	6
SERVICE	0	0	C	C	C	C
BACKWASH	C	C	0	0	C	0
BRINE/SLOW RINSE	C	C	C	C	0	0
FAST RINSE	0	C	C	C	0	0
PILOTS	1	2	3	3	4	-2



FILTER 5 valves - 3 pilots

	VALVES				
CYCLE	1	2	3	4	5
SERVICE	0	0	C	C	C
BACKWASH	C	C	0	0	C
FAST RINSE	0	C	C	C	0
PILOTS	1	2	-1	-1	3

